

2 Bedrooms | 2 Bathrooms

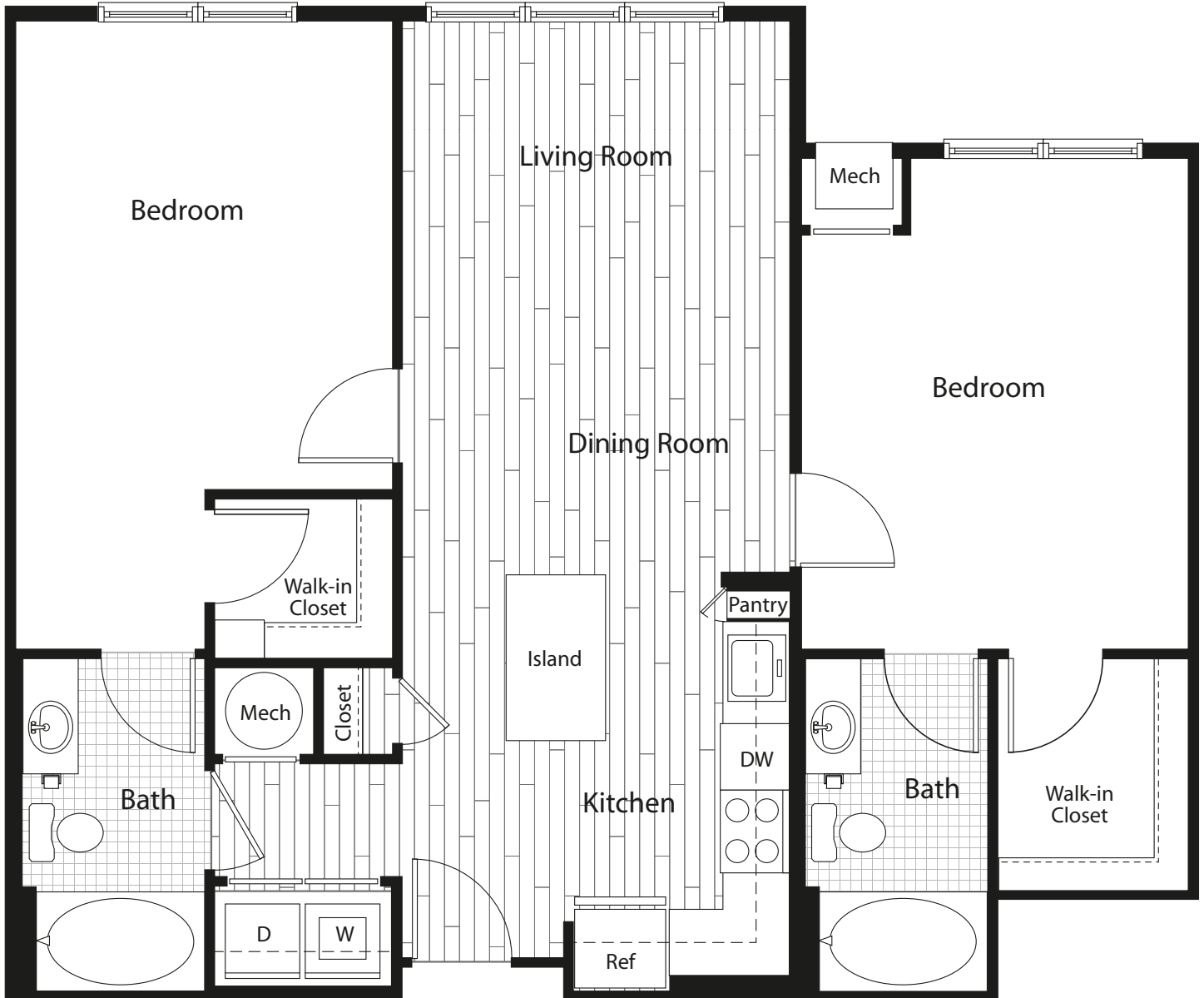
SQUARE FEET |

RENT |

APARTMENT |

city | life | line

Balconies available on this floor plan. See leasing consultant for details.



C1

RhodeIslandRow.com

2300 Washington Place, NE | Washington, DC 20018 | T 202.595.3679 | F 202.747.7105 | E RhodeIslandRow@bozzuto.com